

FT 88-R

Photoelectric diffuse sensor



PRODUCT HIGHLIGHTS

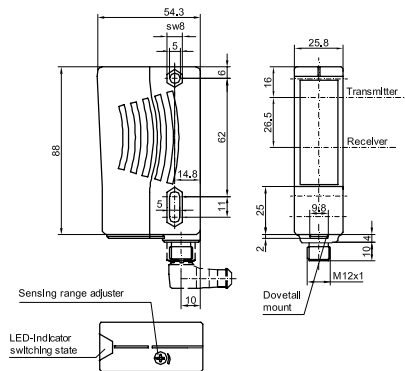
- Push-pull output, antivalent
- Simple alignment thanks to easily visible light spot
- Precise sensitivity adjustment by means of potentiometer

Optical data		Functions	
Scanning distance	50 ... 2000 mm ¹	Indicator LED, yellow	Switching output indicator
Type of light	LED, red, 660 nm	Sensitivity adjustment	Via potentiometer
Light spot size ²	Ø 50 mm	Default setting	Max. scanning distance
Hysteresis	< 12 %		
Electrical data		Mechanical data	
Operating voltage, +U _B	10 ... 30 V DC ³	Dimensions	88 x 54.3 x 25.8 mm
No-load current, I ₀	≤ 40 mA	Enclosure rating	IP 65 ⁴
Output current, I _e	≤ 100 mA	Material, housing	ABS
Protective circuits	Reverse-polarity protection, U _B / short-circuit protection (Q)	Material, front screen	PMMA
Protection Class	2	Type of connection	See selection table
Power On Delay	300 ms	Ambient temperature: operation	-25 ... +60 °C
Switching output, Q	PNP/NPN, push-pull, antivalent	Ambient temperature: storage	-40 ... +75 °C
Output function	N.O./N.C.	Weight (plug device)	70 g
Switching frequency, f (ti/tp 1:1)	≤ 125 Hz	Vibration and impact resistance	EN 60947-5-2
Response time	4 ms		
Connection, BK	N.O.		
Connection, WH	N.C.		

¹ Reference material, white, 90 % reflectivity ² At scanning distance of 2000 mm ³ Max. 10 % ripple, within U_B ⁴ With connected IP 65 plug

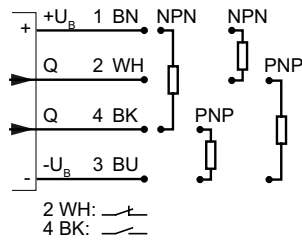
Scanning distance	Switching output	Type of connection	Part number	Article number
50 ... 2000 mm	PNP/NPN, push-pull, antivalent	Plug, M12x1, 4-pin	FT 88-R-GA-L4	821-21009

Plug connection



153-00597

Connection, 4-pin



154-00517

Accessories

Connection cables

From Page A-38

Brackets

From Page A-4